

Merlin's

RESTORATIONS, INC.



YOU NEVER GET A SECOND CHANCE TO MAKE A FIRST IMPRESSION!



WATERGATE



RUST STAIN REMOVAL



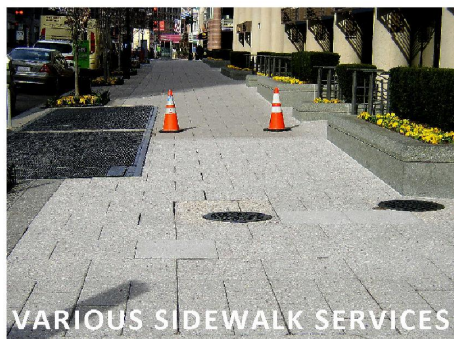
DISCOLORED LIMESTONE



EFFLORESCENCE REMOVAL



FACADE CLEANING



VARIOUS SIDEWALK SERVICES



GRAFFITI REMOVAL

Merlin's Restorations, Inc. has a history of producing superior results for our clients. Our expertise with highly specialized products is what sets us apart from other companies. Graffiti, rust stains, mineral build-up, etc. must first be pre-treated and emulsified prior to cleaning. The use of too much pressure without the skillful and knowledgeable use of these cleaning agents can cause irreversible damage to expensive buildings.

301-518-4689

Merlin's Offers Answers to a Wide Variety of Commercial Building Needs



GARAGES

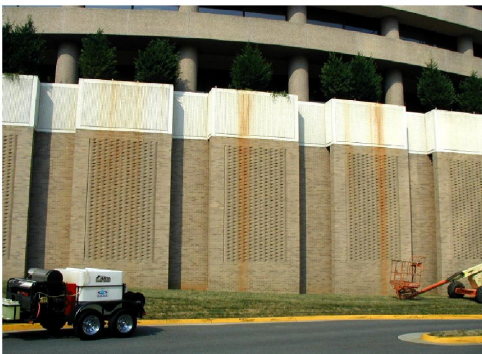
- ▶ Mechanical Sweeping
- ▶ Degreasing
- ▶ Pressure Washing
- ▶ Maintenance Contracts



Merlin's pressure washed carefully selected sections of this building to enhance its appearance for future sale. This Alexandria building sold shortly after being put on the market.



POST CONSTRUCTION PAVER CLEANING



Cleaning difficult to remove **red** clay stains

Before



After



L
I
M
E
S
T
O
N
E



E
F
F
L
O
R
E
S
C
E
N
C
E



R
U
S
T



Stained



Stains Neutralized

RESTORATION
FOUNTAIN



Fire Damage



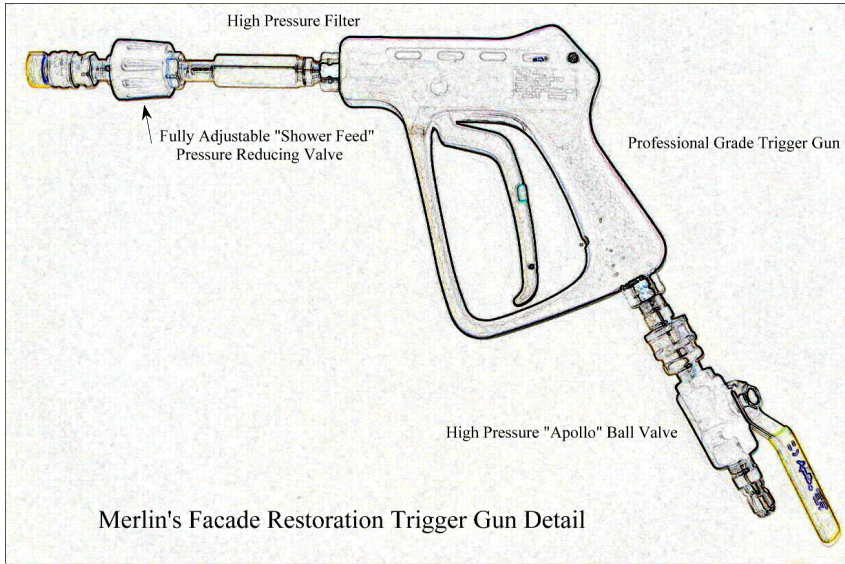
Restoration Sample

RESTORATION
FIRE DAMAGE



Restoratively cleaning this building's entrance facade was an important part of the improvements being made by the building's owner. Leasing agents ALWAYS prefer to show prospective tenants buildings with a clean, bright and inviting entrance.

ANOTHER MERLIN ADVANTAGE
COMPLETELY VARIABLE PRESSURE !



**PRESSURE ADJUSTABLE
TRIGGER GUN**



**DUAL LANCE
VARIABLE PRESSURE
WAND**

"HARD ON DIRT, GENTLE ON YOUR BUILDING"

By using dual lance wands and our "in house" custom built trigger guns, our **technicians** have **immediate and complete control** of the pressure being use to **safely** clean all stone, masonry, caulking, etc.

**WE REALLY CAN MAKE A DIFFERENCE IN THE THE WAY YOUR SIDEWALKS LOOK!
A DINGY SIDEWALK LOADED WITH STICKY, UNSIGHTLY GUM IS A REAL EYESORE**

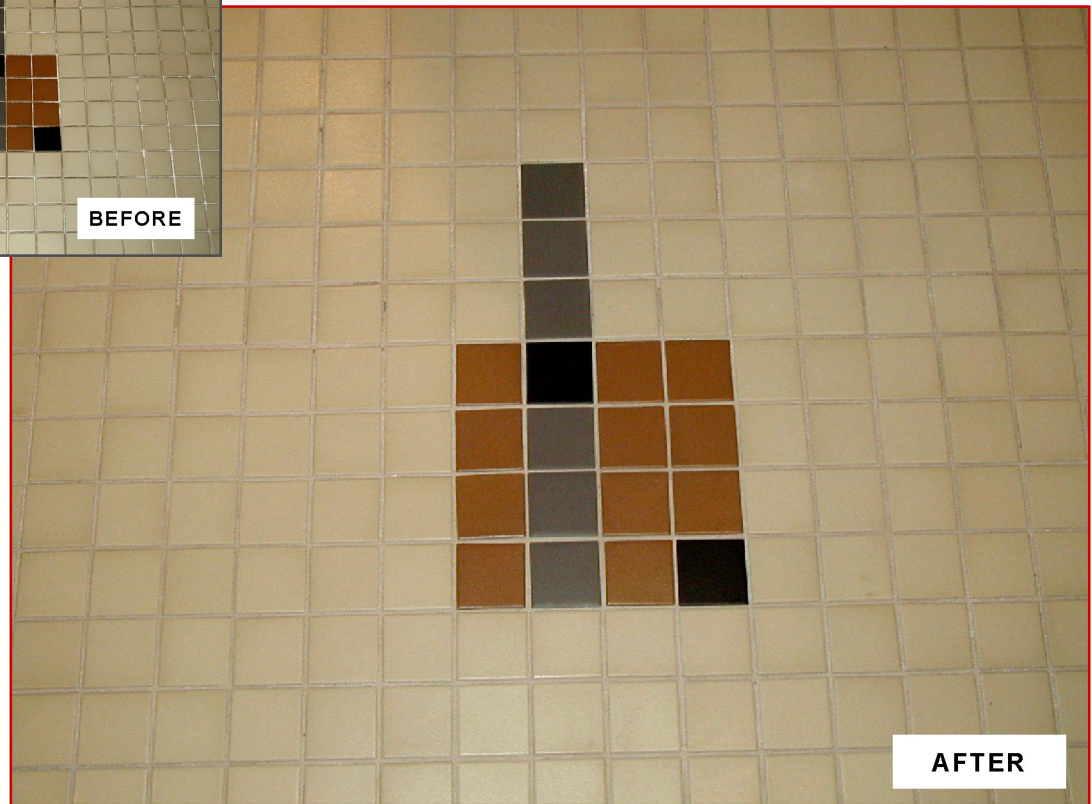
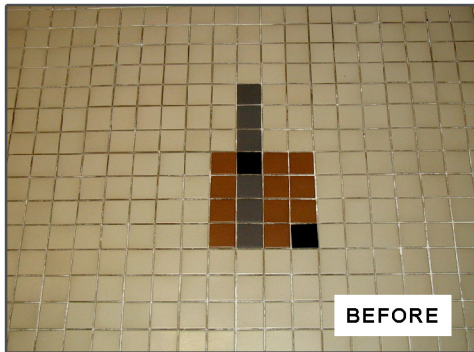


S
I
D
E
W
A
L
K



Although the service shown here was still in progress, it is easy to see the difference our **restorative cleaning methods** will make in the appearance of **any** building's sidewalks.

YOUR RESTROOMS WILL NEVER LOOK AND FEEL CLEAN AND SANITARY WITH DIRTY, UNSIGHTLY GROUT !



MERLIN'S GROUT RESTORATION SERVICE

All grout is porous, meaning its surface is filled with microscopic holes. As a result of daily mopping, each of these holes captures water, dust, dirt, hair etc. Mold, mildew, dirt, and lime scale becomes imbedded in the grout over a period of time causing an unhealthy and unsightly environment.

Restoring the grout to a clean and sanitary condition requires special training, products and cleaning methods not generally available to your in-house staff.

Merlin's safely restored the grout in the photos above and can do the same for your property. Samples are always free.



WATER PARK

CRYSTAL CITY, VIRGINIA



TEST SAMPLE



partially restored

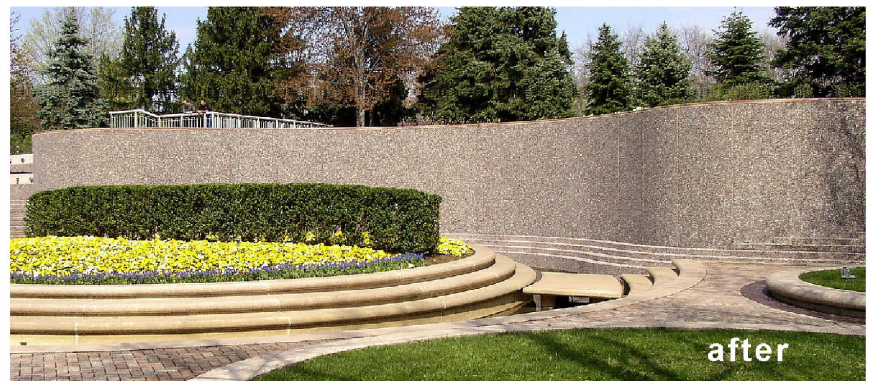


after

The Water Park in Crystal City is one of its main attractions in warmer weather, a place for lunch al fresco, evening concerts and other events. **But this water fountain shares many of the same problems as all indoor and outdoor water features**; namely, a regular build-up of rust stains, mineral stains and mold causing a dingy and unsightly appearance. **Merlin's specializes** in maintaining these water fountains and features by removing rust stains, mineral deposits and mold using highly specialized cleaning methods that leave the stone and masonry looking sparkling and brand new.



before



after